



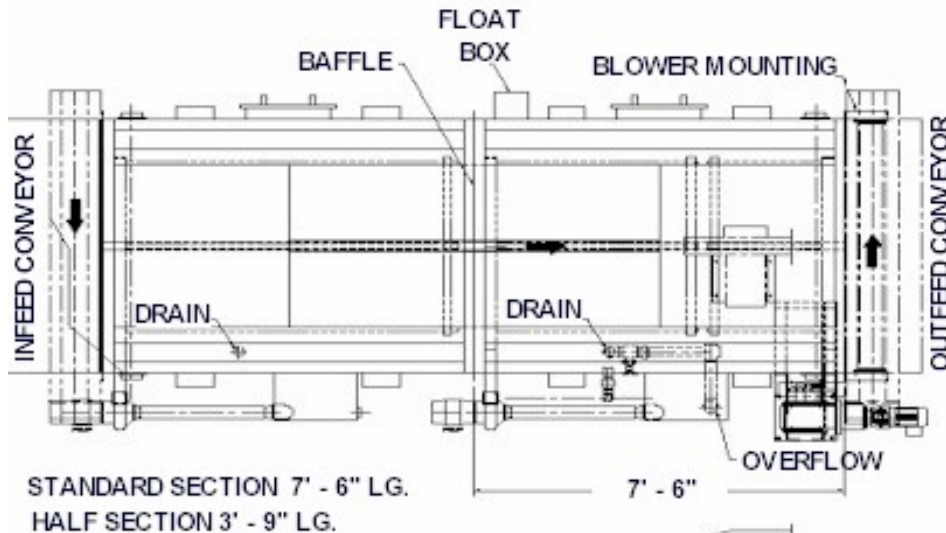
# Warmer General Specifications

## Special Features:

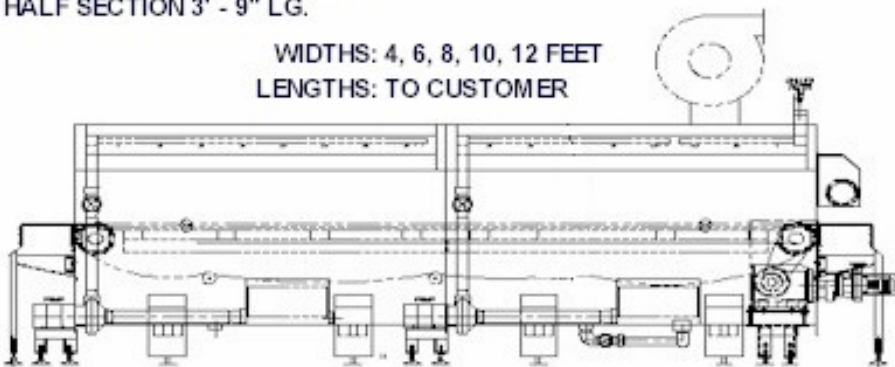
- Pull-out dual screens on each pump box allow for cleaning of screens without shutting down pumps.
- Modular design allows for adding length for future production requirements, or removing sections if moved to a slower line.
- Modular design allows for ease of shipping and installation.
- Dynamic infeed and outfeed eliminates the need to push the last few bottles in at the end of a run or a shift, or to pull the bottles out at the outfeed.
- Individual float switches for each pump box eliminates potential pump damage due to clogged screens.
- Low volume exhaust blower used to prevent product damage from overheating in a stopped condition
- Stainless steel plumbing is much sturdier than PVC, and is less likely to be damaged
- All bolts and parts are to North American standards, and metric tools or replacements are not required

## Options:

- Spare parts kit
- Less costly deadplate infeed/outfeeds available
- Non-standard items to meet a customer's preference can be done on a case-by-case basis



WIDTHS: 4, 6, 8, 10, 12 FEET  
LENGTHS: TO CUSTOMER



Typical pump

## Bevco Sales International Inc.

9354 - 194th Street, Surrey  
British Columbia, Canada V4N 4E9

Tel: (604) 888-1455  
Fax: (604) 888-2887  
Toll Free: 1-800-663-0090

E-Mail: [info@bevco.net](mailto:info@bevco.net)  
Website: <http://www.bevco.net>

**Bevco's container warmers are designed to warm a cold filled product up to a temperature warm enough to prevent condensation on the outside of the product.**